

THE JOURNEY PROJECT

**Sexual harassment in the workplace can happen anywhere, to anyone.
It can be overwhelming to navigate.**



Reach out to THE JOURNEY PROJECT for individual support,
system navigation, and up to 4 hours of free legal advice.

We can help you navigate a clearer path to healing.

☎ 709-722-2805 or 1-833-722-2805

💬 709-986-2801

✉ support@journeyprojectnl.com

Mon – Fri: 9:00 am – 4:00 pm

The Journey Project: Navigating Your Journey, Together.

www.journeyproject.ca

THE JOURNEY PROJECT

Sexual harassment in the workplace can exist at any level of an organization. Clients, customers, supervisors, and managers were the most commonly reported source of harassment. ^[1]

Everyone deserves to feel safe at work.



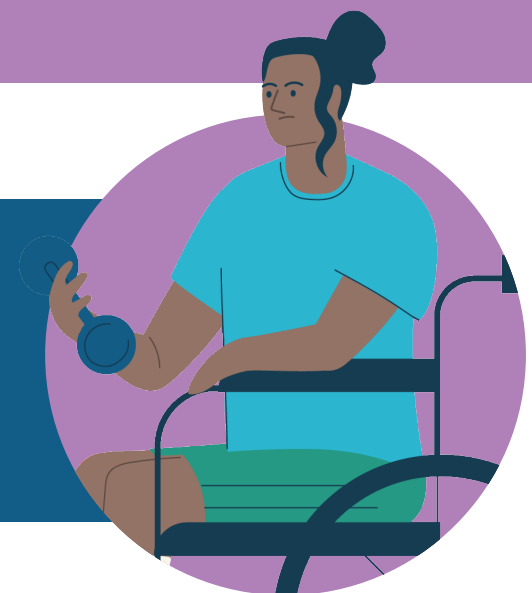
Healthcare setting, Sales and Service and trades-related industries have the highest reported rates of sexual harassment in the workplace in Canada.

Women are more likely to experience sexual harassment than men.
52% of women reported being the target of sexual harassment in the workplace^[2]



Indigenous women and 2SLGBTQIA+ people are three times more likely to experience workplace sexual harassment.

In Canada, the most common type of workplace harassment is verbal abuse ^[3]



☎ 709-722-2805 or 1-833-722-2805
💬 709-986-2801
✉ support@journeyprojectnl.com
Mon – Fri: 9:00 am – 4:00 pm

The Journey Project: Navigating Your Journey, Together.

www.journeyproject.ca

